

# Operational Overview



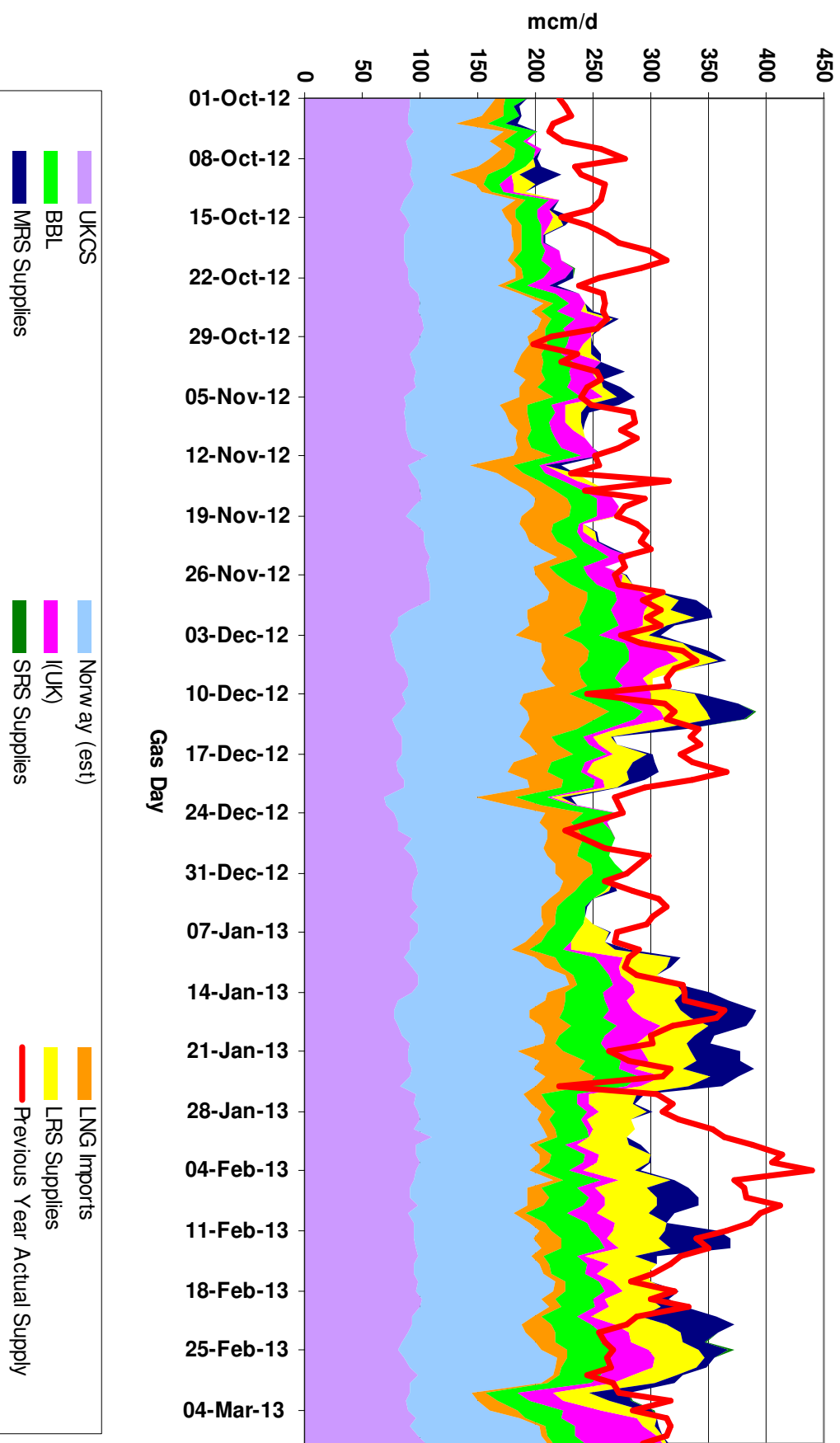
Interesting Day Overview: March 2013



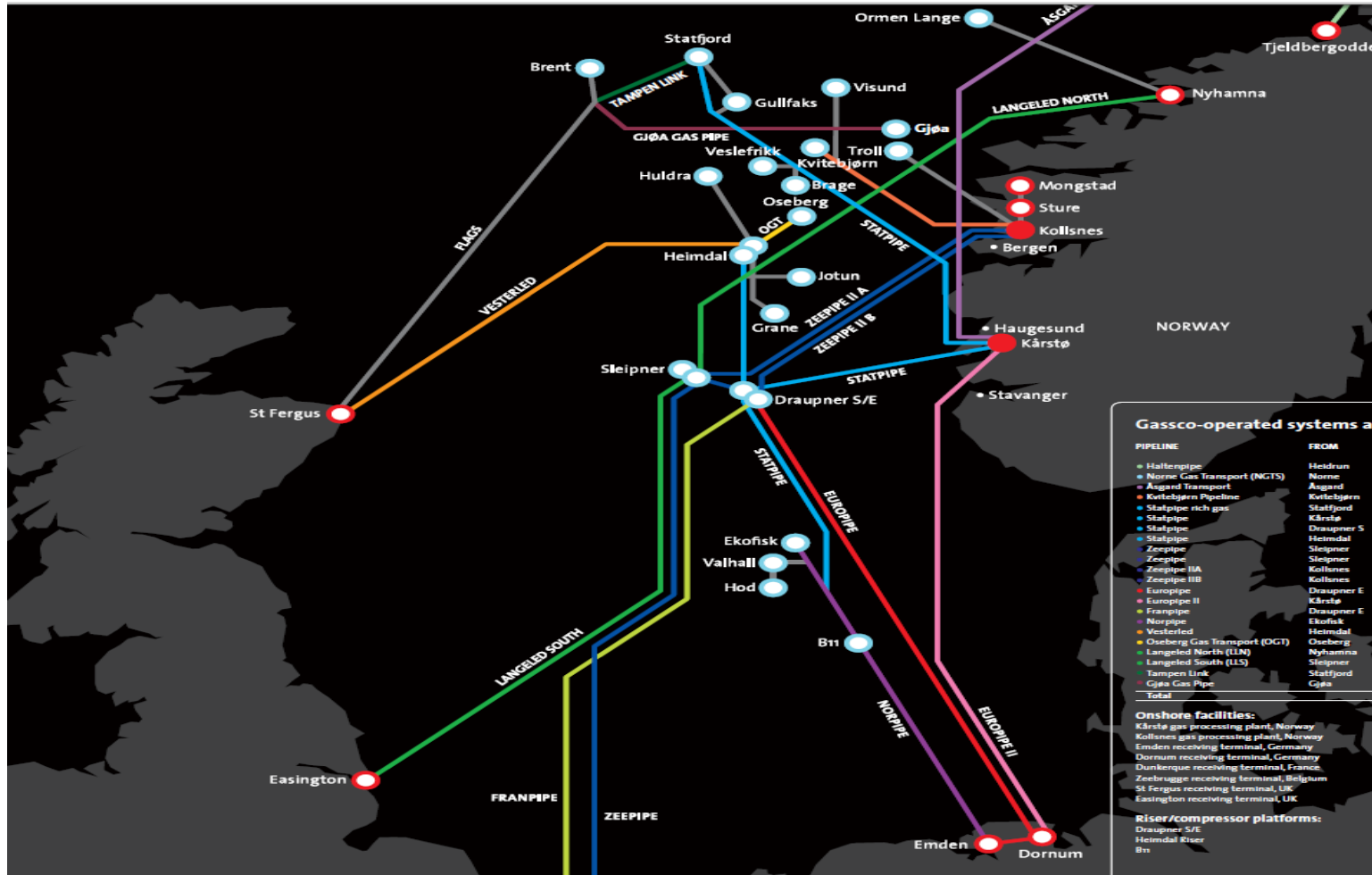
2<sup>nd</sup> & 3<sup>rd</sup> March 2013

# Gas Supply Breakdown

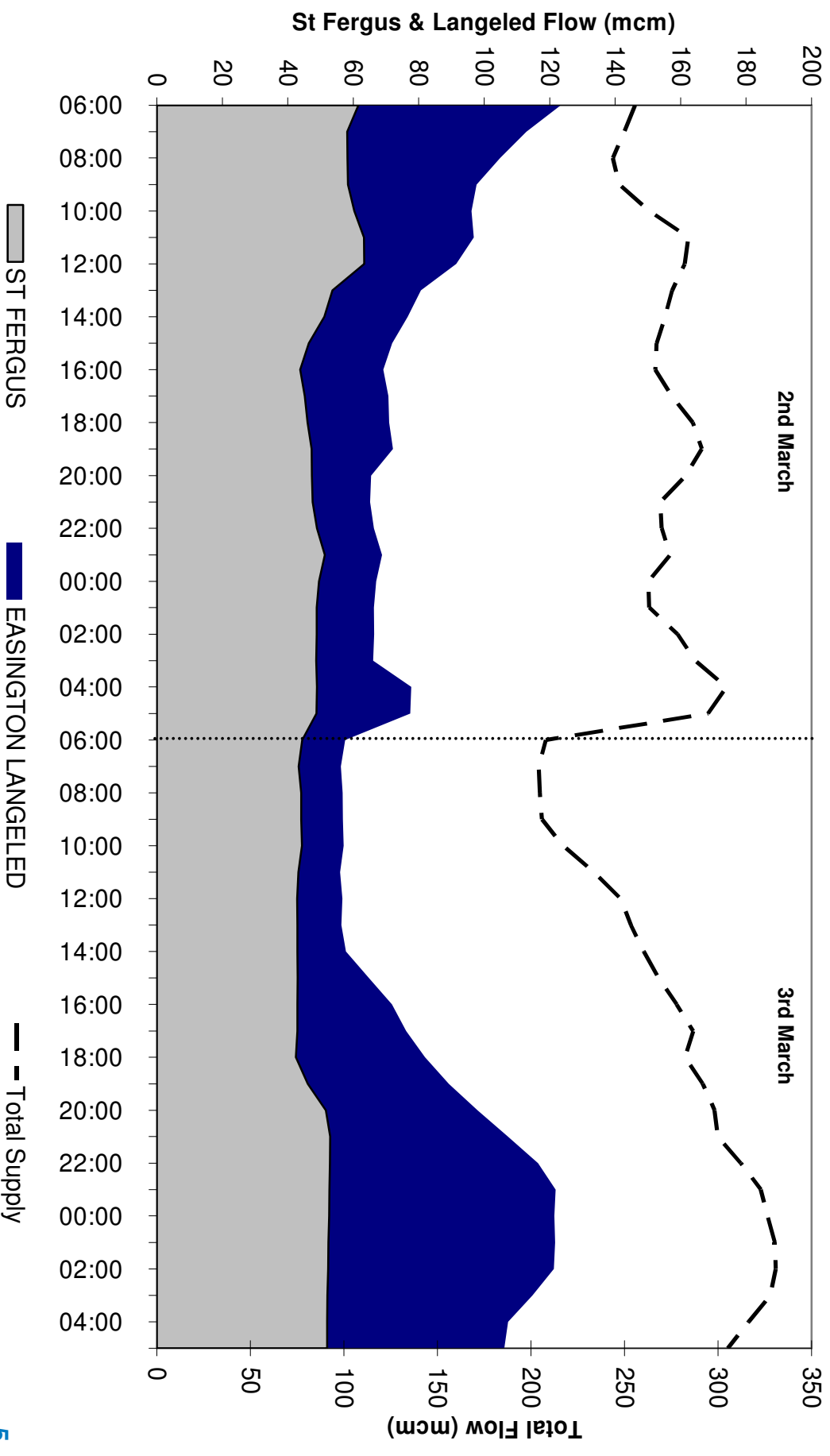
1<sup>st</sup> Oct 2012 to 8<sup>th</sup> March 2013



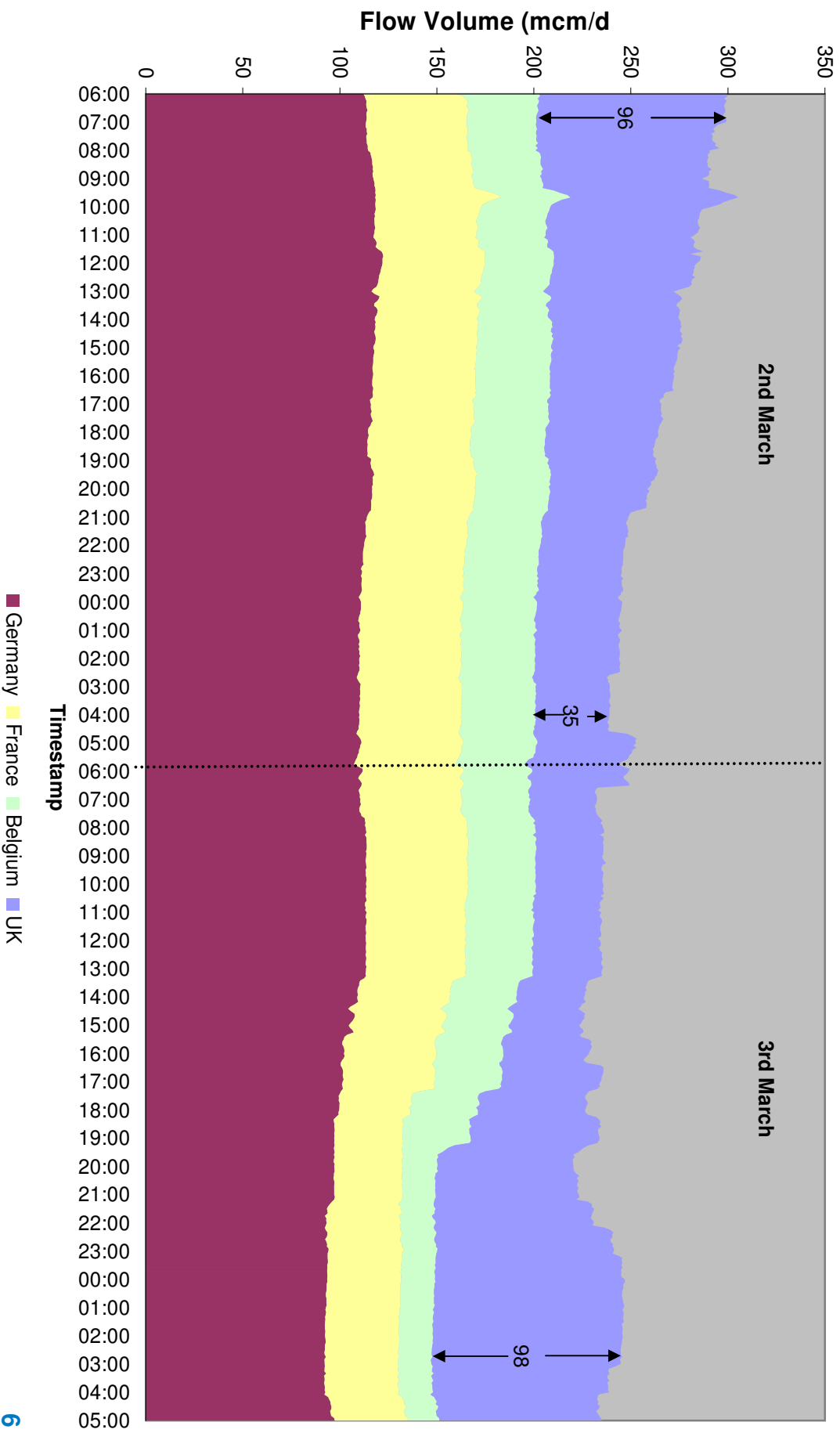
# Norwegian Outage: Nyhamna and Kvitejorn Processing Plant



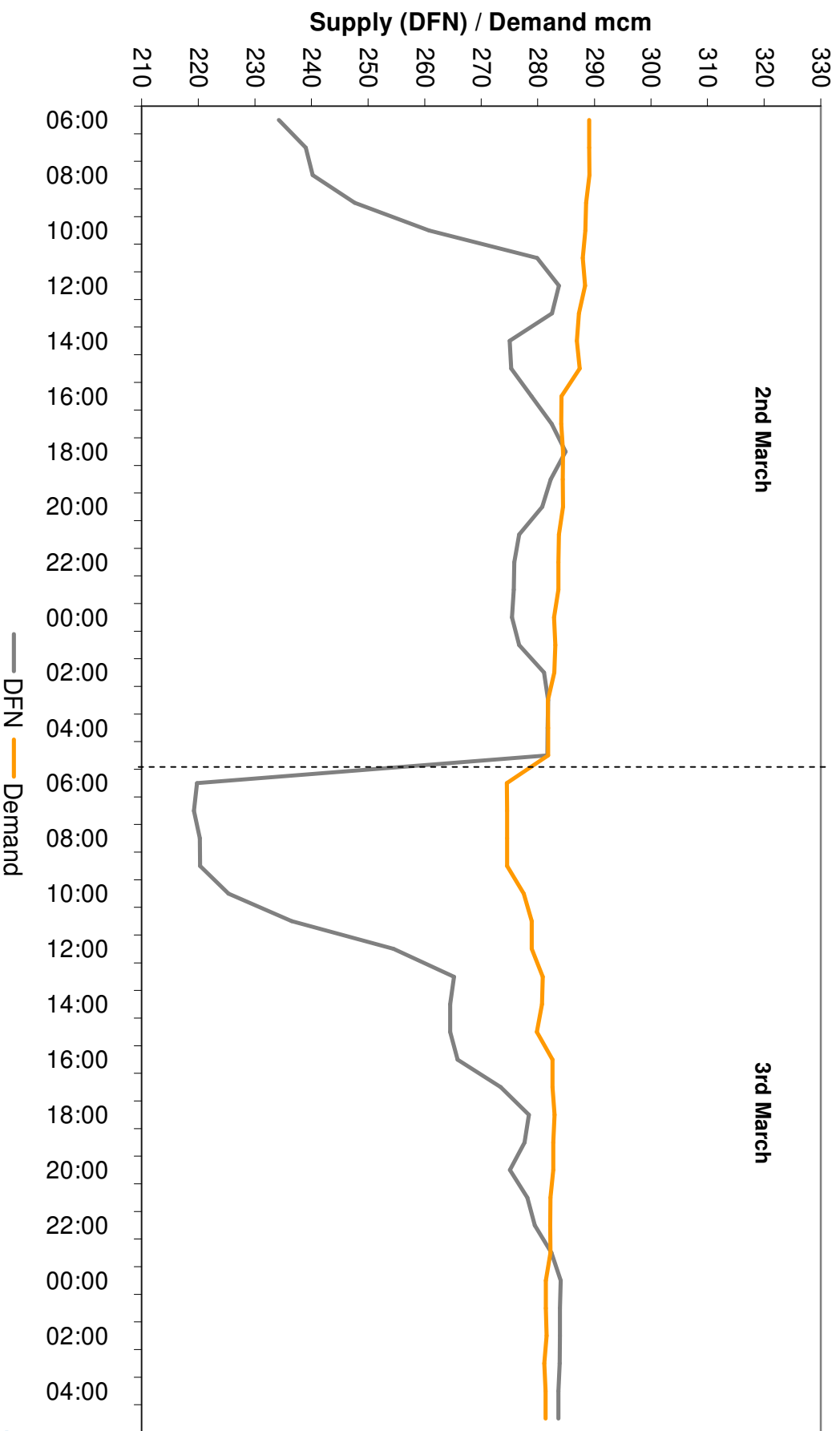
## 2nd – 3rd March: Impact to Langede & St Fergus flows



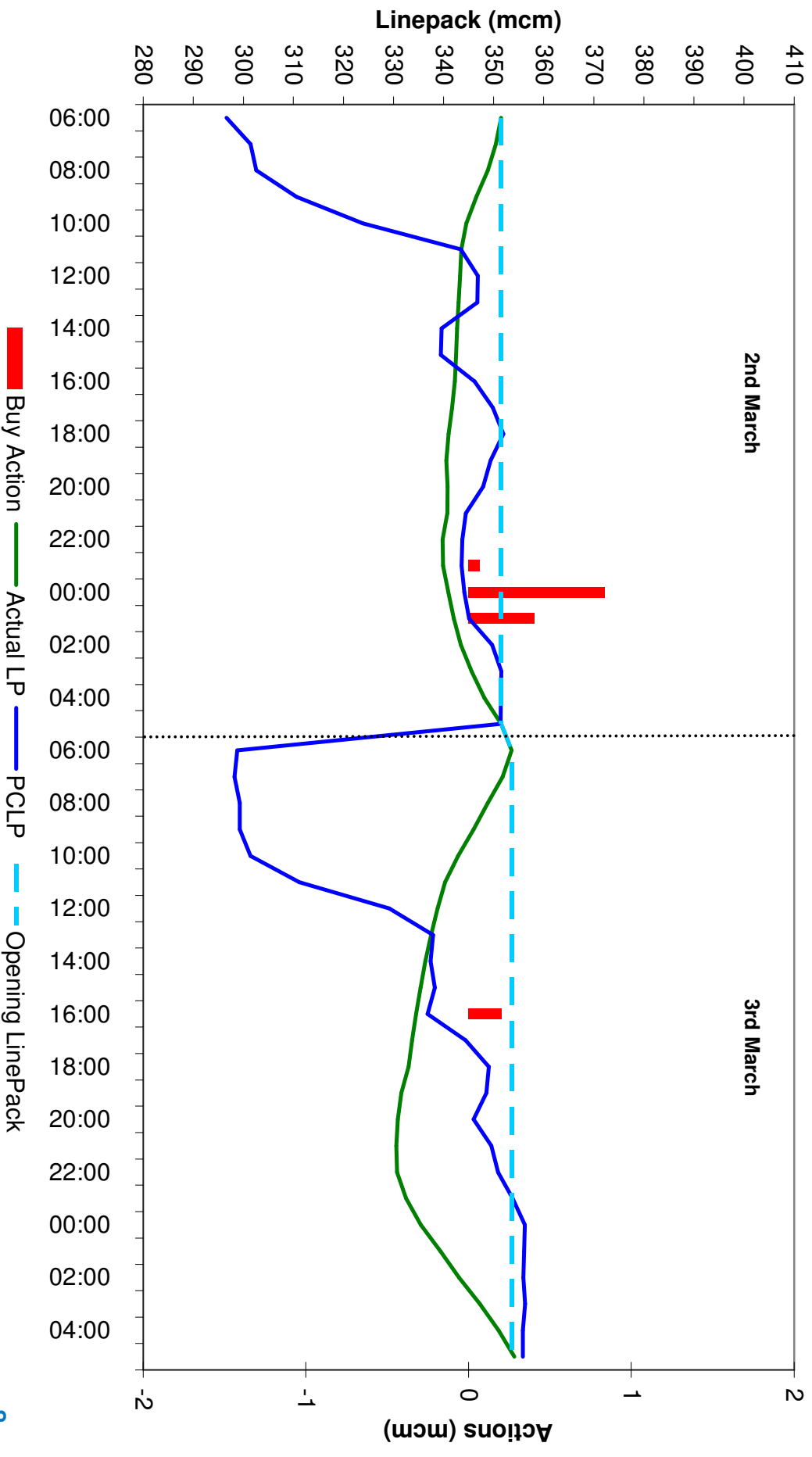
## 2nd – 3rd March: Impact to Norwegian Flows



## 2nd – 3rd March: Supply & Demand

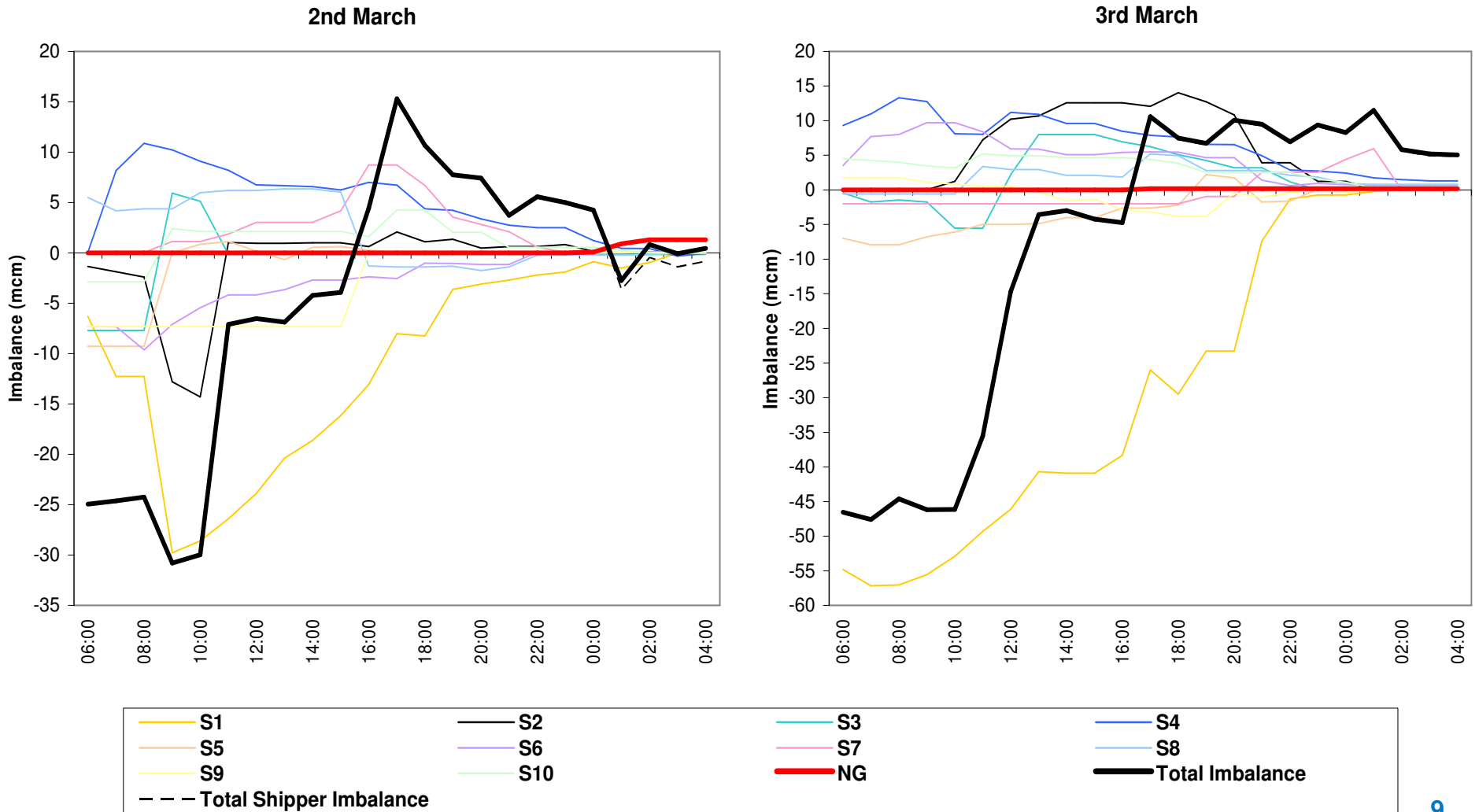


## 2nd – 3rd March: Outturn

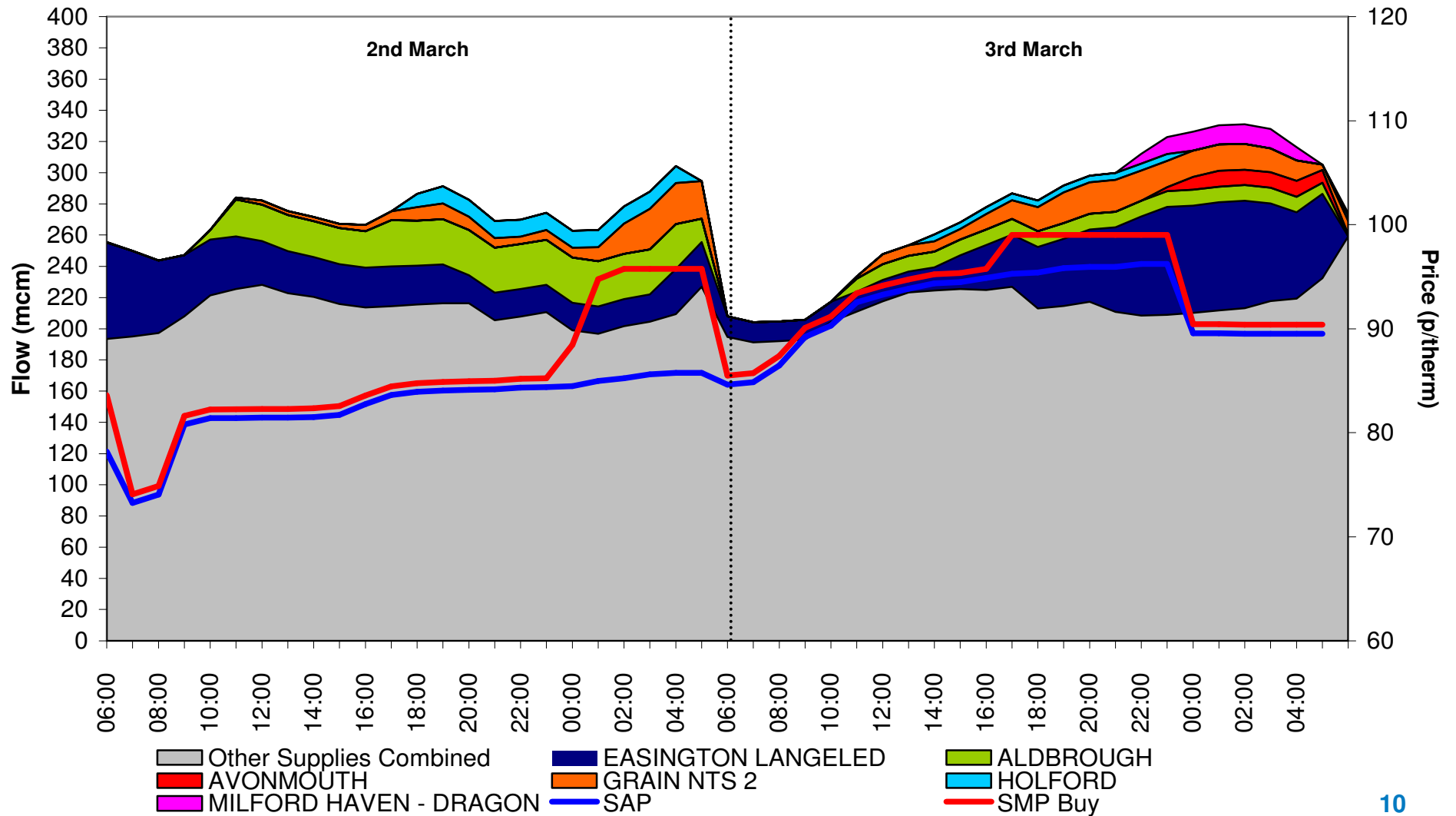




## 2<sup>nd</sup> – 3<sup>rd</sup> March: Hourly Nomination Imbalance



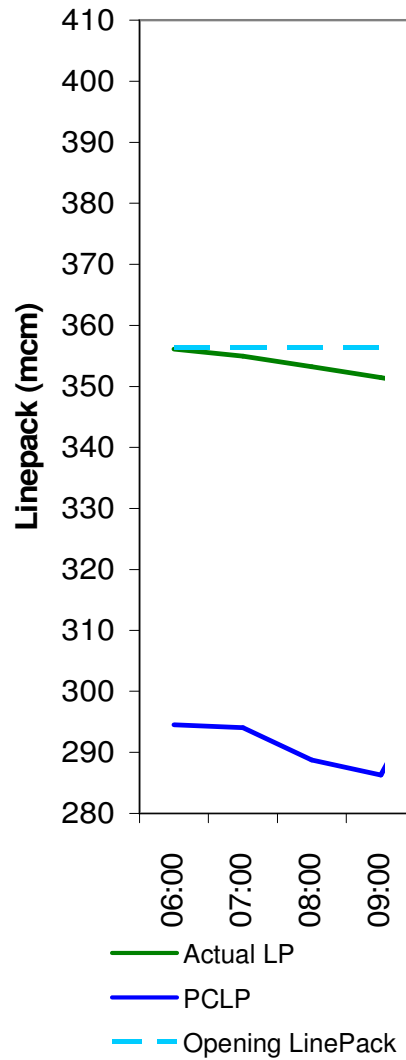
## 2<sup>nd</sup> – 3<sup>rd</sup> March: Market Response



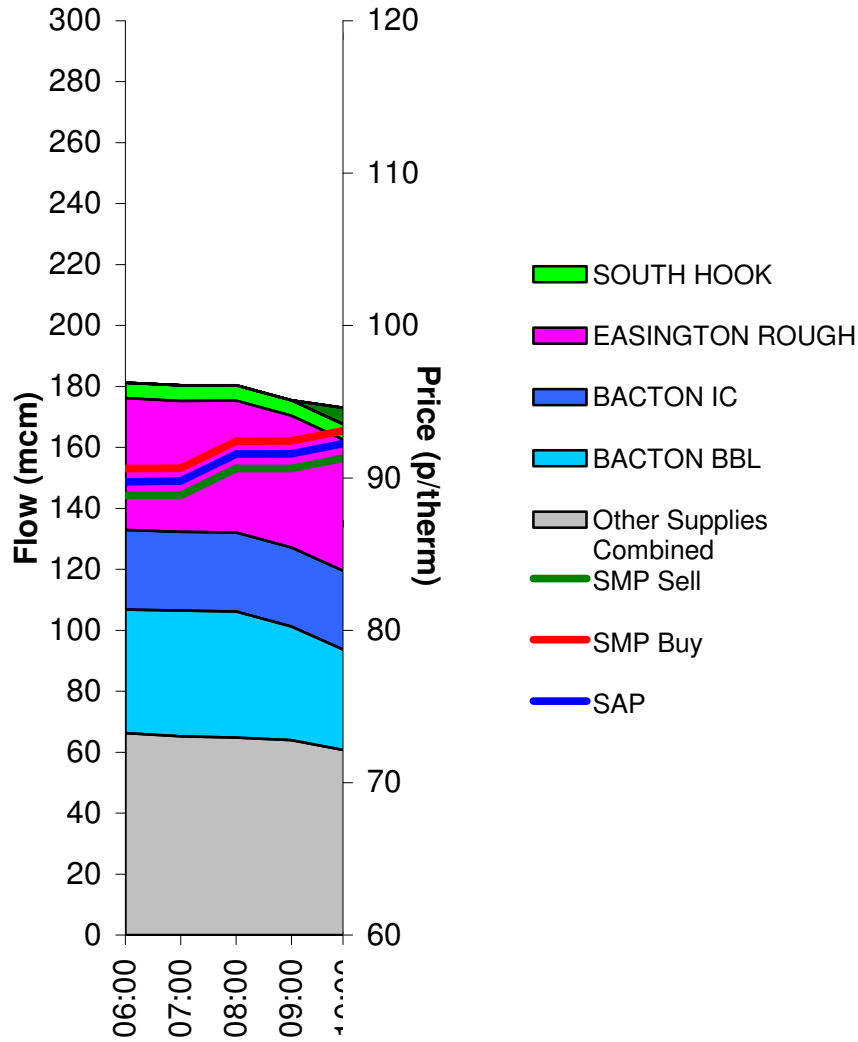


4<sup>th</sup> March 2013

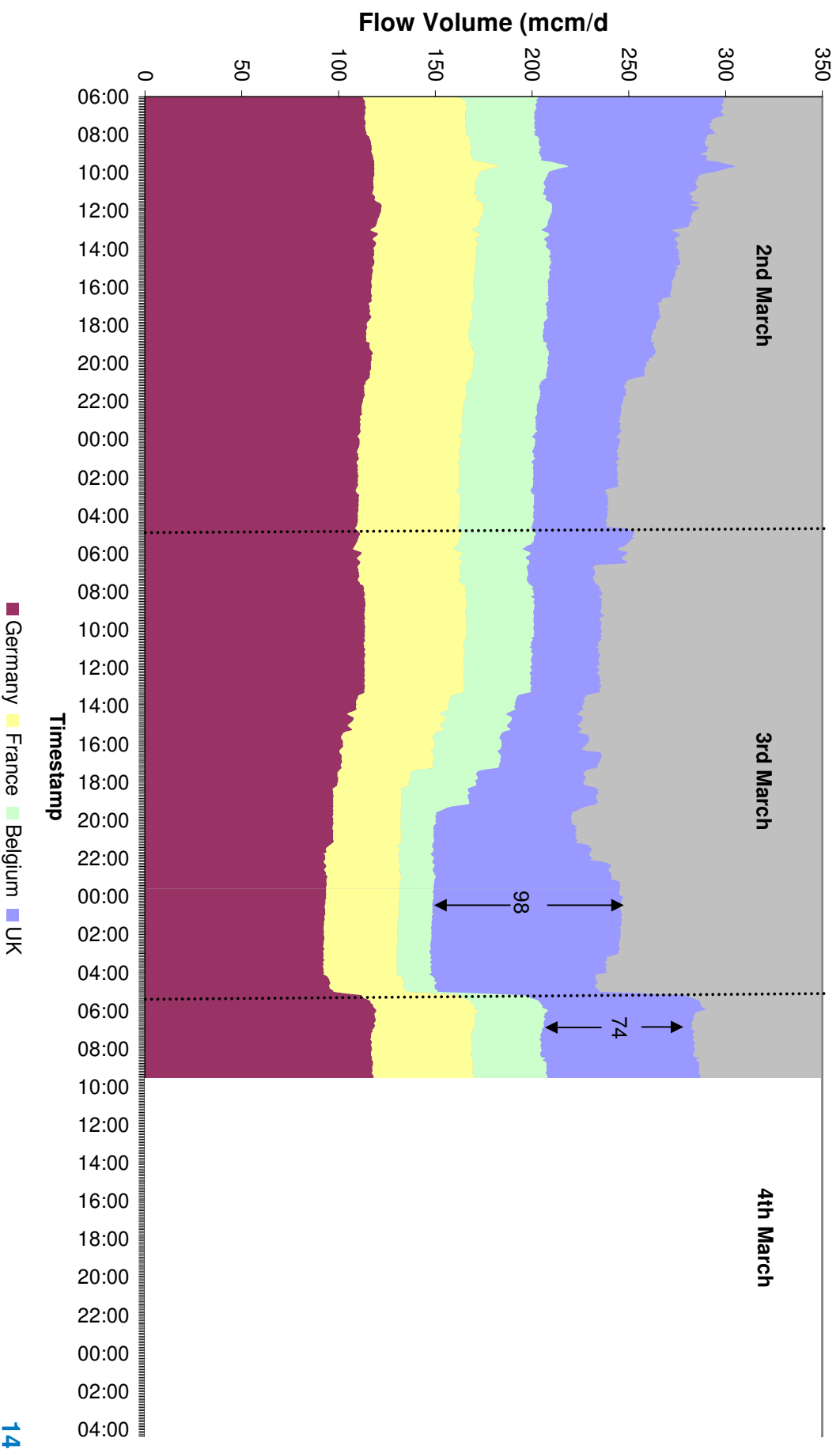
## 4<sup>th</sup> March: Start of Day Position



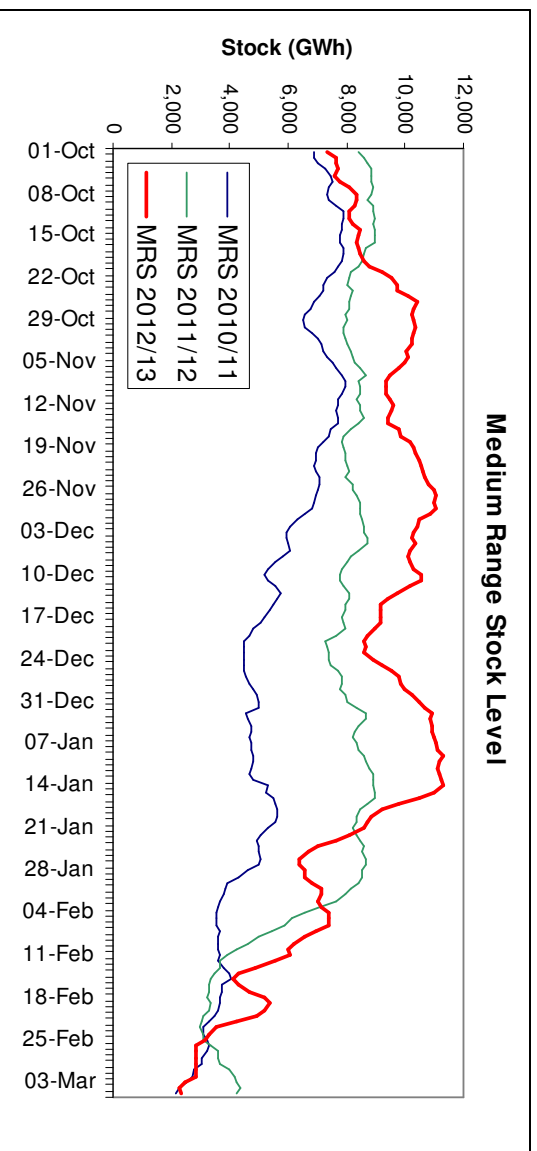
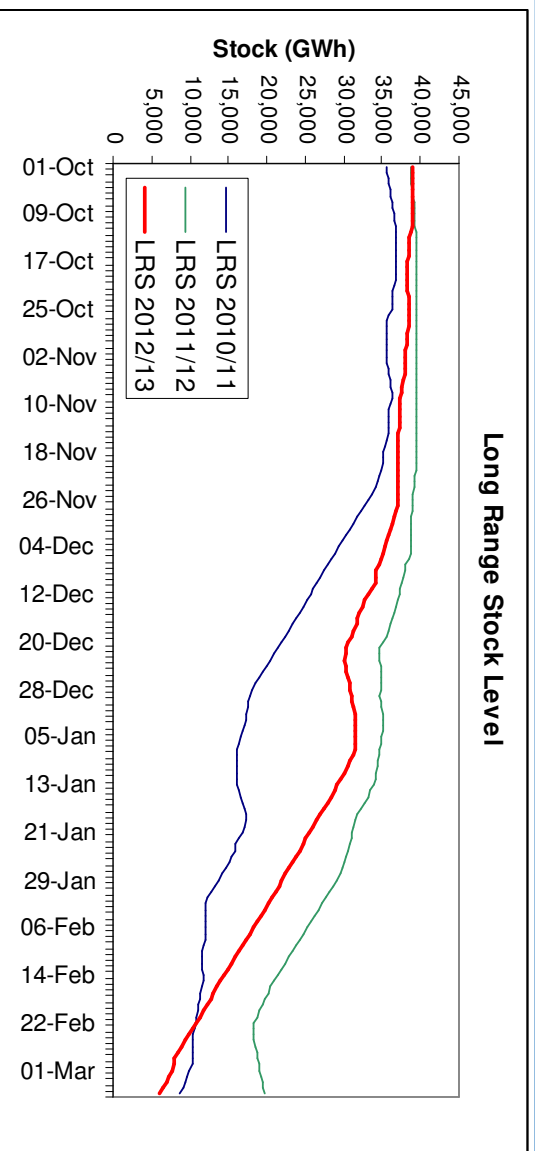
## 4<sup>th</sup> March: Start of Day Flows



## 2nd – 4th March: Norwegian Flows



## 4<sup>th</sup> March: Storage Levels



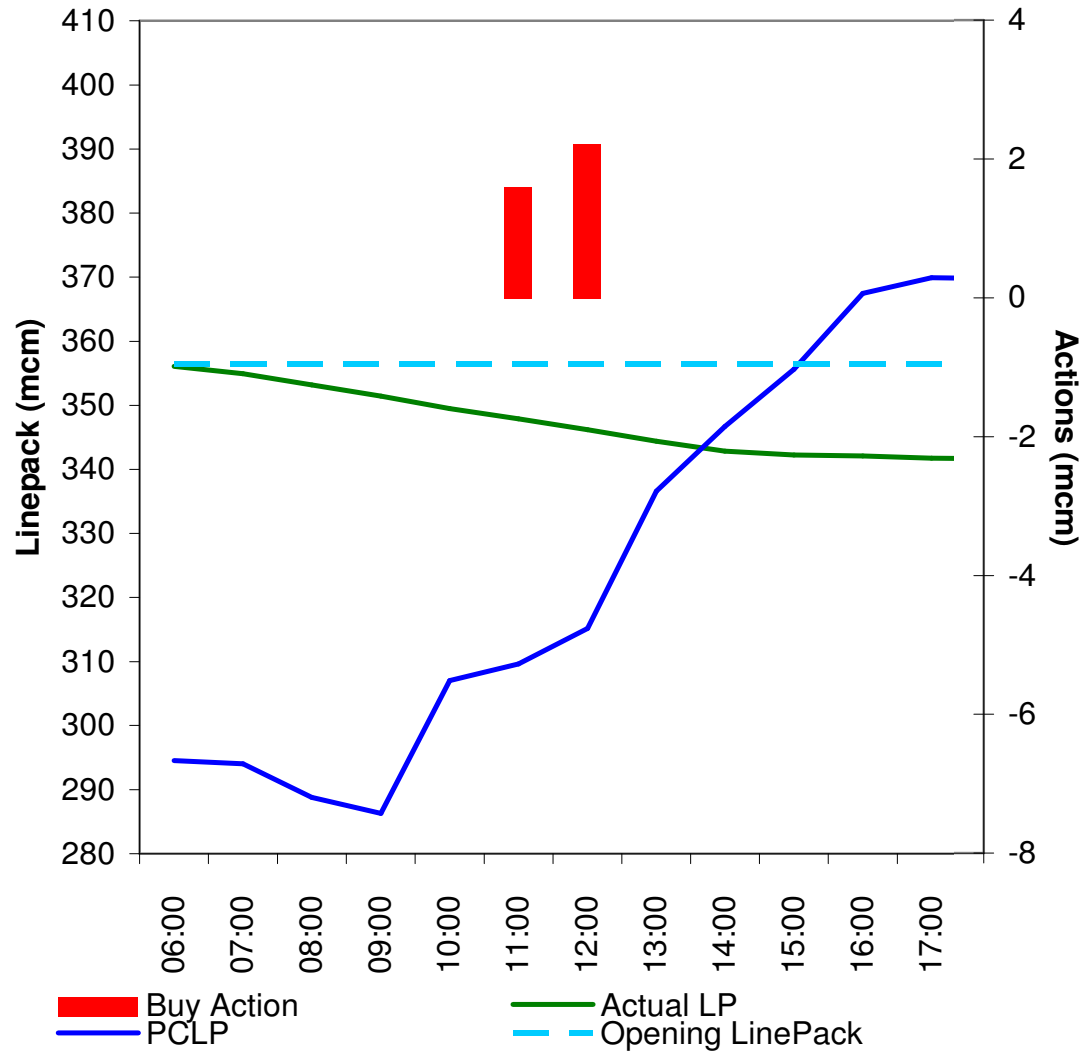
## 4<sup>th</sup> March: LNG Comparison

---

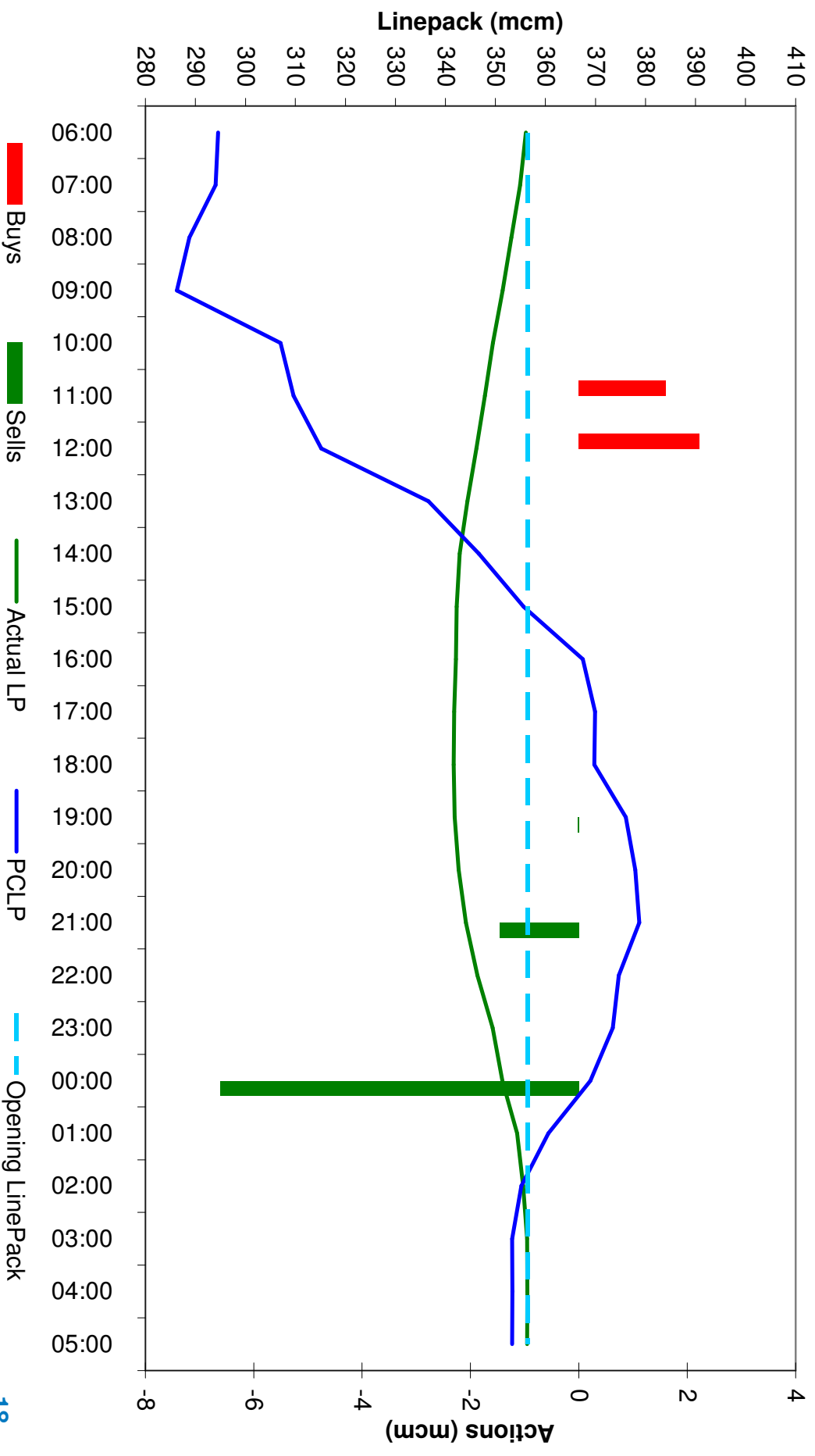
	Winter 2010/11	Winter 2012/13
<i>Max Supply</i>	<i>473.88mcm</i>	<i>391.75mcm</i>
<i>Average Supply</i>	<i>336.90mcm</i>	<i>285.37mcm</i>
Maximum LNG Supply	127.44mcm	70.86mcm
No of days where LNG supply >100mcm	11days	0 days
Average daily LNG Flows	68.51mcm	20.68mcm
LNG as a % of Total Flows	20.3%	7.2%



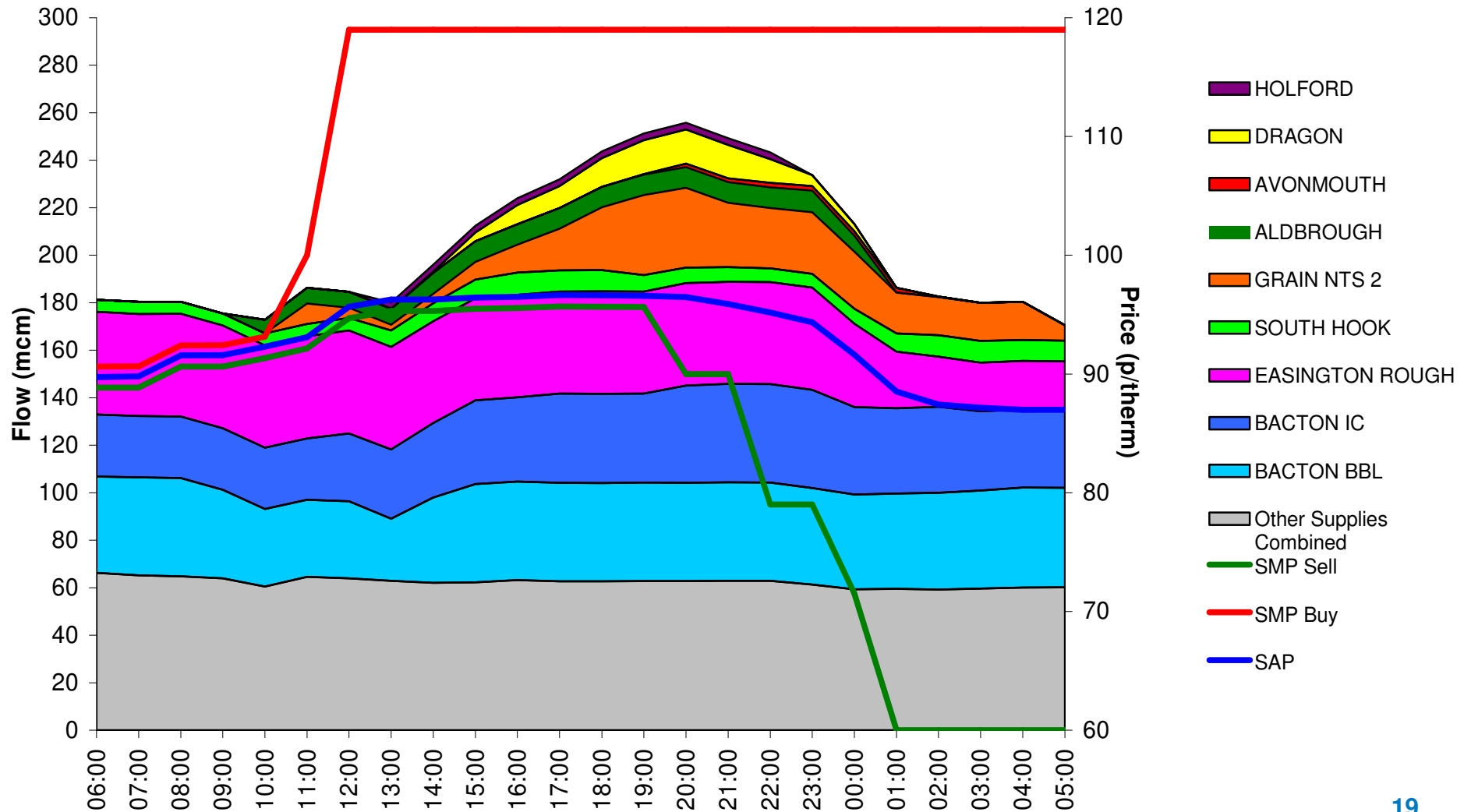
## 4<sup>th</sup> March: Initial Response



4th March: Oversupply



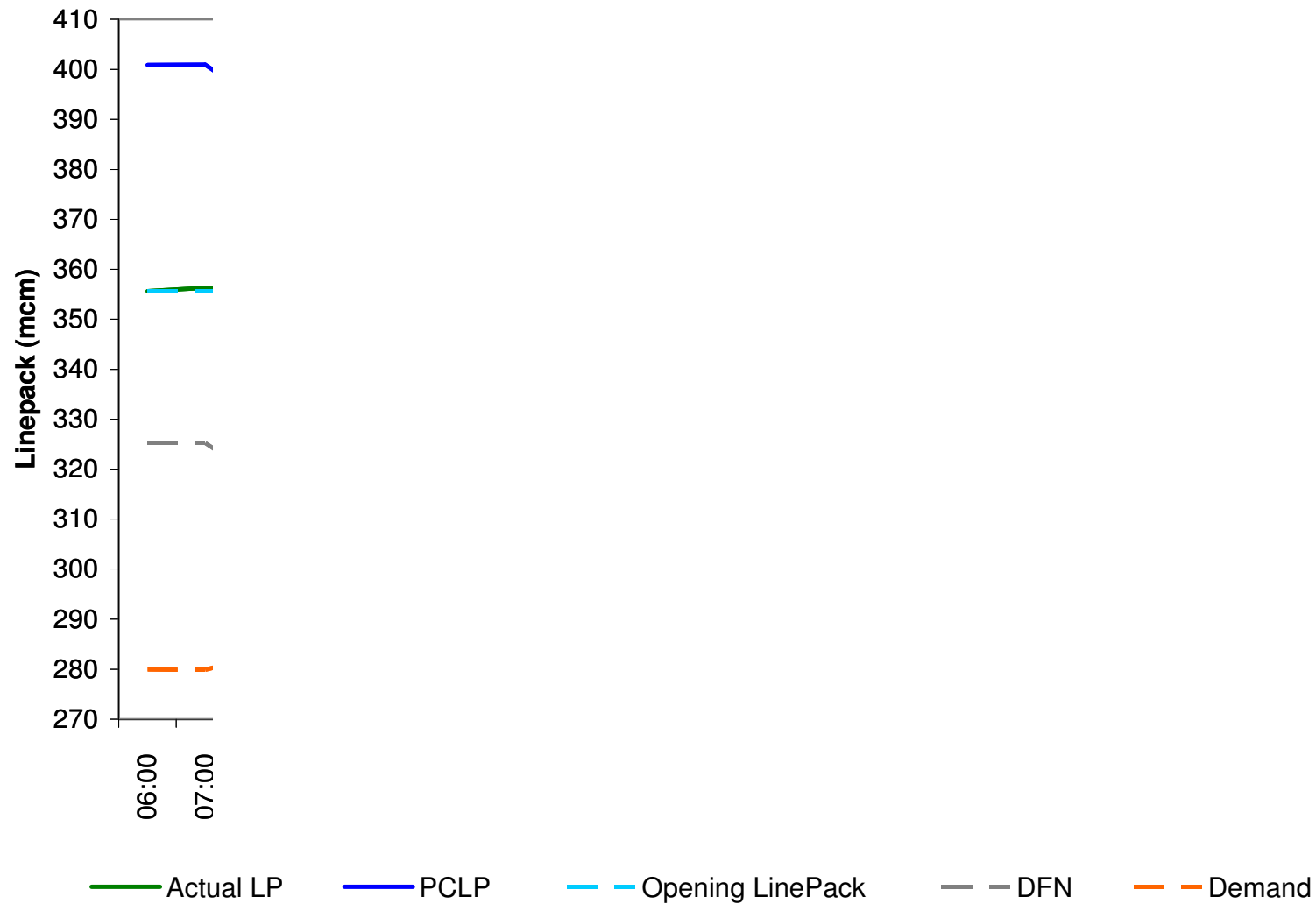
# 4<sup>th</sup> March: Market Response





5<sup>th</sup> & 7<sup>th</sup> March 2013

## 5<sup>th</sup> March: Opening Position



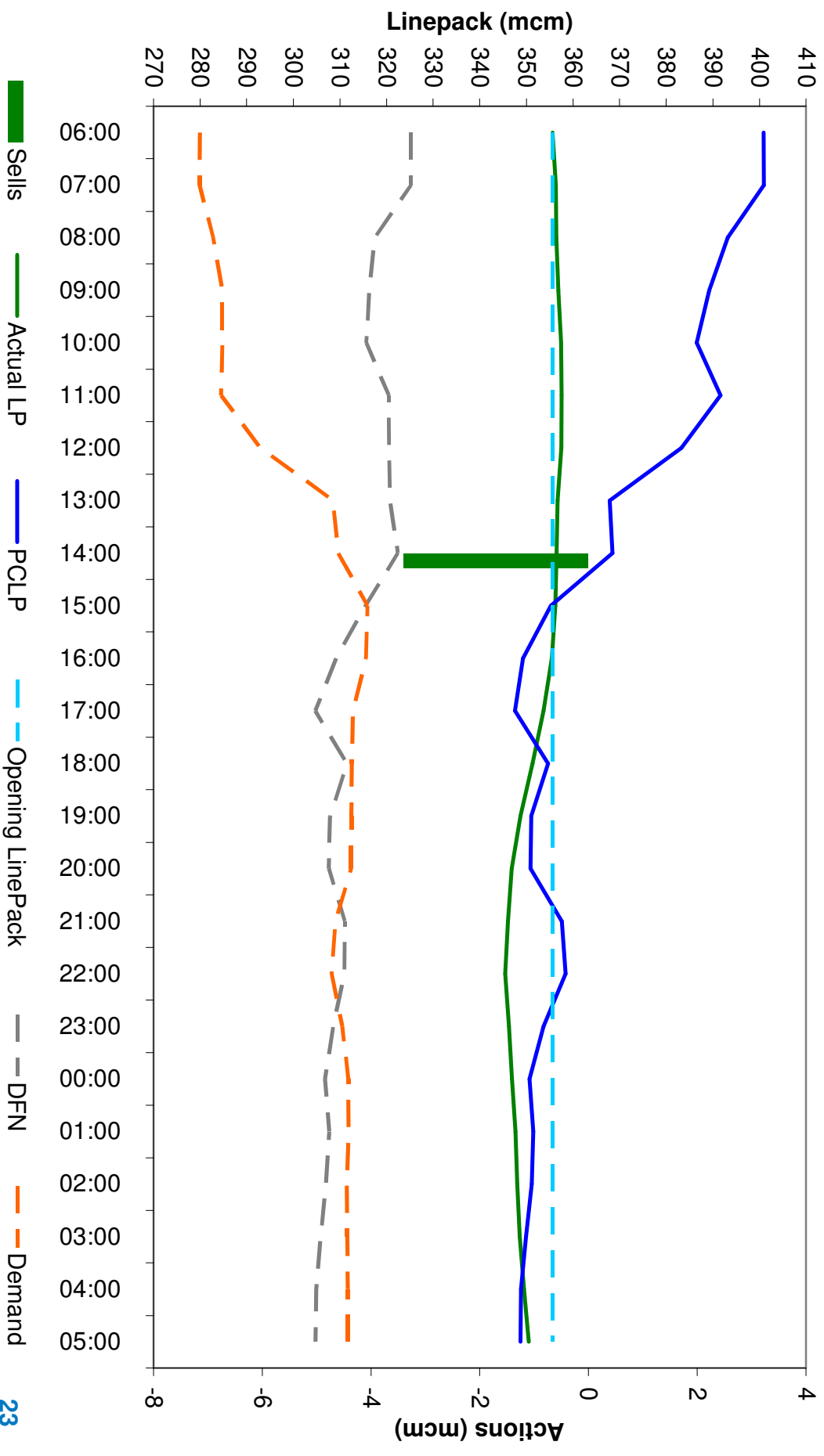
## 5<sup>th</sup> March: NG Actions

---

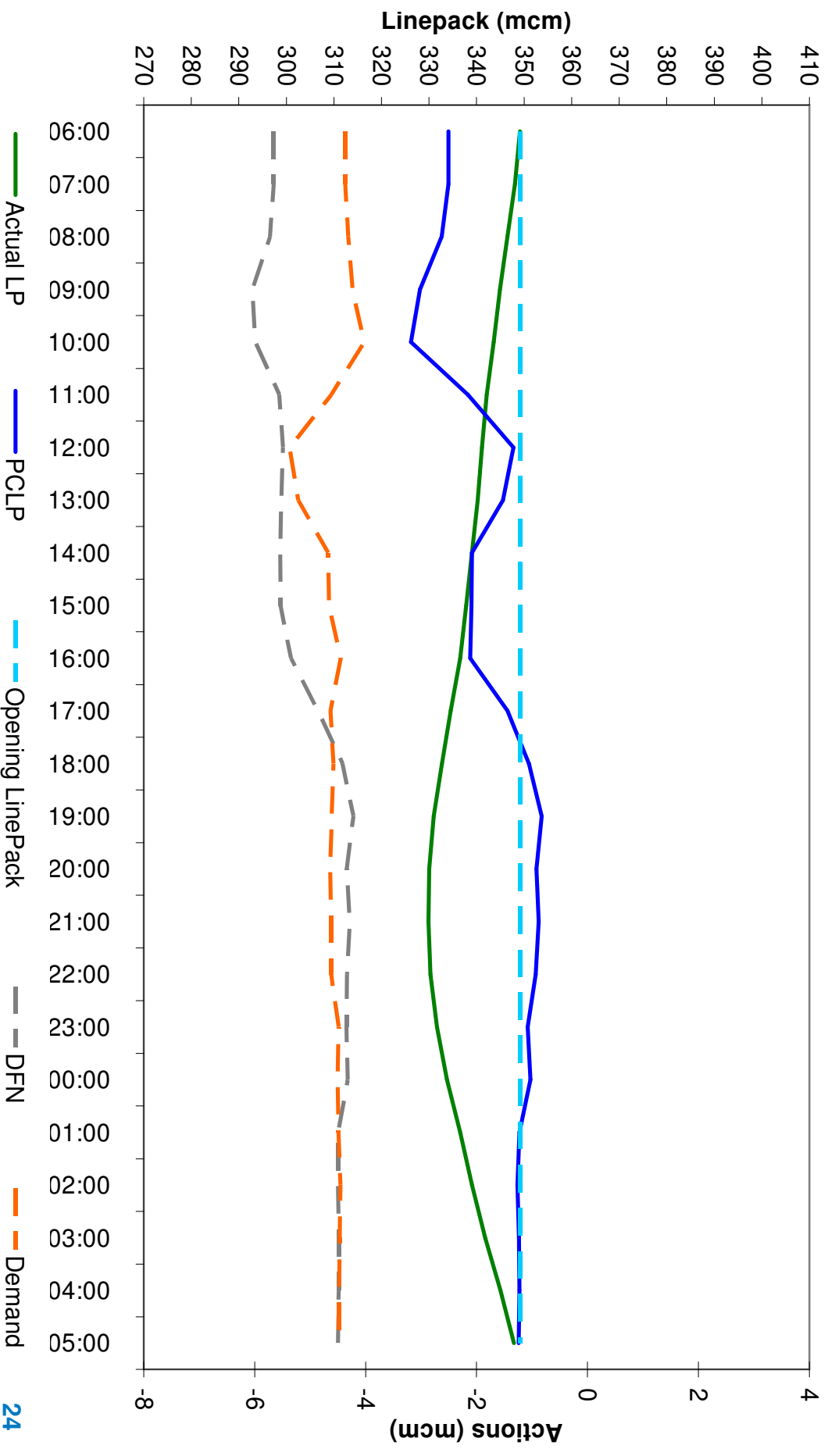
### 5<sup>th</sup> March

- 06:00 Scaleback of Interruptible Entry Capacity and Release of additional firm entry capacity withheld
- 08:30 ANS Message sent requesting Locational Bids
- 14:00 National Residual Balancing Sell action
- 15:00 Locational Bids Accepted at locations Bacton and Great Yarmouth Power Station
  
- 03:00 Operational restriction lifted

## 5<sup>th</sup> March: Outturn



7<sup>th</sup> March:





## 7<sup>th</sup> March: NG Actions

---

### 7<sup>th</sup> March

- 21:00 ANS Message sent requesting Locational Bids
- 22:30 ANS Message sent for Scaleback of Interruptible Capacity
- 22:30 Locational Bids Accepted at locations Bacton and Great Yarmouth Power Station
- 00:00 Scaleback of Interruptible Capacity effective
  
- 06:00 Operational restriction lifted

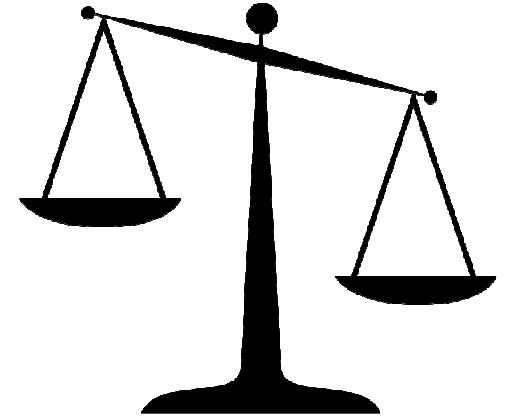
# Locational Actions Overview



## Balancing the NTS

---

- National Grid's role as a 'residual system balancer' is to ensure that overall NTS pressure is within safe operating parameters
- There are a number of commercial / physical tools available to the GNCC
- The System Management Principles Statement details the type of Balancing Actions that can be taken by National Grid.
  - This is available on our website at;  
<http://www.nationalgrid.com/uk/Gas/OperationalInfo/operationaldocuments/ProcurementSystemManagementServicesStatementsReports/NTS/>
- One of these options is to carry out **Locational Energy Trading**.



## Locational Trade

---

- What?**
- Locational trades are used to deliver or offtake gas quantities from NTS linepack at a particular location(s) to manage local NTS pressures.
  - National Grid NTS may request Locational Energy offers at a specified ASEP(s) or for all NTS Exit Points that reside in a specified NTS Exit Zone(s)
- When?**
- National Grid NTS will at its discretion, request Locational offers via its ANS services when local linepack levels are anticipated to fall below or exceed an acceptable level
- Who?**
- Offers can be posted by all registered OCM Users on the Locational OCM Market
  - Offers will be accepted if National Grid NTS believe that the action is likely to result in a positive impact on the Locational issue



## Process Summary

---

Step	Action	National Grid NTS	NTS User
1	Request for Locational Energy Offers (Buy or Sell)	<input checked="" type="checkbox"/>	
2	Offers posted on the Locational Energy Market		<input checked="" type="checkbox"/>
3	Offer acceptance based on SMPS	<input checked="" type="checkbox"/>	
4	Approval of trade in Gemini Nomination & Allocation details updated to reflect trade & maintain shipper balance.	<input checked="" type="checkbox"/>	
5	Locational Trade details available to view in Gemini	<input checked="" type="checkbox"/>	<input checked="" type="checkbox"/>
6	Physical Response at ASEP(s) or NTS Exit point(s)		<input checked="" type="checkbox"/>

## Further Information

---

- System Management Principles Statement;
  - <http://www.nationalgrid.com/uk/Gas/OperationalInfo/operationaldocuments/ProcurementSystemManagementServicesStatementsReports/NTS/>
- NTS Exit Zone and Exit Capacity Constraint Actions;
  - <http://www.nationalgrid.com/uk/Gas/OperationalInfo/NTSExitZones/>

Shipper Liaison Team:

Email: [.box.gasoperations.shipperliaison@nationalgrid.com](mailto:.box.gasoperations.shipperliaison@nationalgrid.com)

Telephone: 01926 656568

# GDW Subscription Service



# Gas Deficit Warning Subscription Service

nationalgrid

- A text and email subscription service exists for Gas Deficit Warning (GDW) notices



- Subscribers to the old Gas Balancing Alert (GBA) service will be contacted via email shortly requesting that they re-subscribe to the GDW service if desired and providing a link to do so.
  - This is required as it is anticipated that a large amount of subscriber information is no longer valid
  - The service is being amended to make it easier for users to manage their preferences



# Gas Deficit Warning Subscription Service

---

nationalgrid

- Those who have already subscribed to the GDW service (using the nationalgrid.com website) since December 2012 will not need to take any action
- For the avoidance of doubt, in the event of a GDW being issued before the subscription confirmation process is complete, the existing list of GBA subscribers will be notified
- For any queries contact:
  - [Gasoperations.Shipperliaison@nationalgrid.com](mailto:Gasoperations.Shipperliaison@nationalgrid.com); or
  - Carrie Clifford : 01926 654273